

DATA SHEET

Encom™ Discover™ v12.0

EXTEND MAPINFO PROFESSIONAL WITH GEOSPATIAL CAPABILITIES
DESIGNED SPECIFICALLY FOR THE NATURAL RESOURCES INDUSTRY.



Summary

Encom Discover v12.0 provides a comprehensive GIS toolbox of import, visualisation, interpretation and analysis tools for the exploration, mining, engineering and environmental sectors.

Benefits

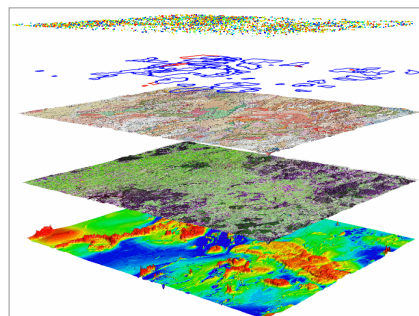
- Seamless integration of geochemical, geological, environmental, geophysical, drilling and cartographic datasets.
- Extensive analytical capabilities for temporal, geostatistical, graphical and spatial trend identification and data normalisation.
- Create and analyse detailed drillhole cross-sections in the MapInfo Professional environment.
- Advanced grid interpolation and manipulation capabilities, including massive grid support.
- Supercharge MapInfo Professional with a massive range of productivity tools.

OVERVIEW

Pitney Bowes Business Insight's latest release of Encom Discover showcases the ongoing innovative developments that have made Discover the 'must-have' GIS application for geoscientists worldwide. Additions include major enhancements in our massive grid technology, a new drillhole cross-section generation tool and easy section regeneration, and automatic batch printing from a map series, as well as numerous other improvements.

Import

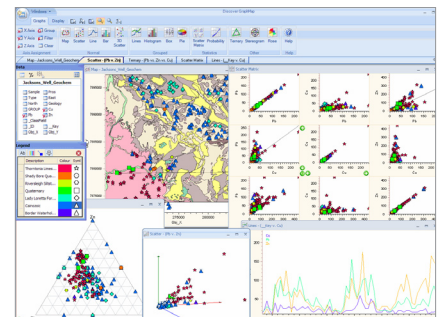
The Discover application extends the data handling capabilities of MapInfo Professional, with read and write support for over one hundred industry standard tabular, vector, raster image and gridded data formats. These include advanced functionality such as image rectification and reprojection, direct ECW import, vector import and conversion (such as .GPX and Google Earth .KML) and database connectivity (e.g. DataShed and Acquire)



Combine and assess diverse data types to build a coherent interpretation of your project.

Analyse

The analysis and examination of geochemical, structural and temporal datasets can add significant value to your data. The Discover application provides an extensive array of advanced analytical functionality at your fingertips, allowing varied datasets to be assessed dynamically in statistical, geostatistical, spatial, temporal and graphical views.



Analyse temporal and multivariate trends with a range of dynamic graph types.

Discover's analytical tools, such as the GraphMap and Geochem modules, can help distinguish trends and anomalies in multivariate data acquired from multiple sources. Just as importantly, these tools will assist in identifying and eliminating false anomalies that can arise from sampling and assaying errors or geological bias, with options such as data conditioning, null handling, and data normalisation.

Encom™ Discover™

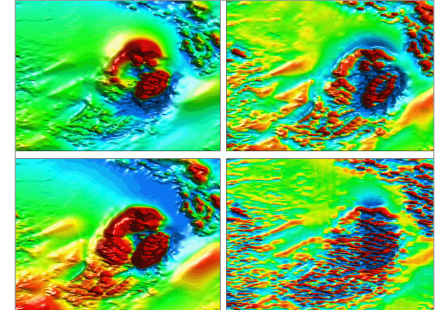
DEVELOPED FOR
GEOLOGICISTS BY A TEAM
OF INDUSTRY-EXPERIENCED
GEOLOGISTS, GEOCHEMISTS
AND GEOPHYSICISTS.

Gridded Surface Interpolation and Manipulation

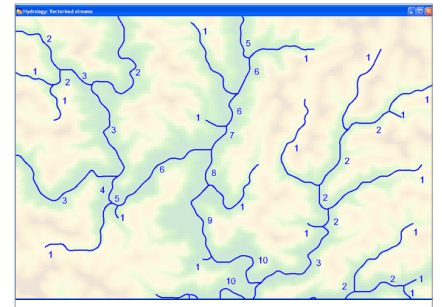
Discover provides a comprehensive set of surface gridding tools for interactively interpolating point, line and region data, such as geochemical, geophysical, hydrological, meteorological, topographic, chemical or environmental surveys. A broad range of gridding methods are available, such as Kriging, Density, Inverse Distance Weighting and Minimum Curvature algorithms. The resulting grids can be contoured, queried and modified with a versatile collection of transformation tools. Compute curvature, slope, aspect, volumes, and other surface properties, or use the versatile grid calculator to derive values from user-defined expressions.

Working with large high resolution grids, such as continental-scale SRTM data? Discover can create and import massive multiple-gigabyte grids, then zoom and pan around them in real time and modify their appearance. These massive grids can be processed, manipulated and analysed with many of the grid utilities, such as conducting flood risk analysis from regional high resolution LIDAR DEM data.

Environmental management and water authorities will benefit from the Hydrology

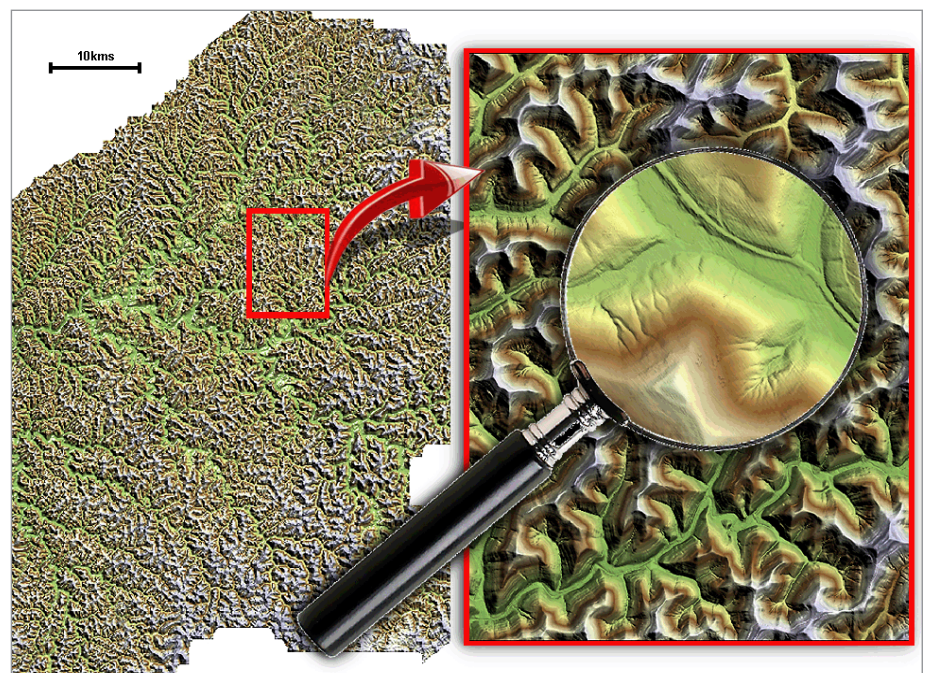


Advanced grid filtering techniques, such as smoothing and band-pass filters.



Feature rich catchment and stream analysis capabilities.

module's ability to extract and vectorise drainage features and watershed/catchment boundaries from digital elevation models. Shreve and Strahler classification methods are available, as well as stream 'burning' and pit filling functionality.

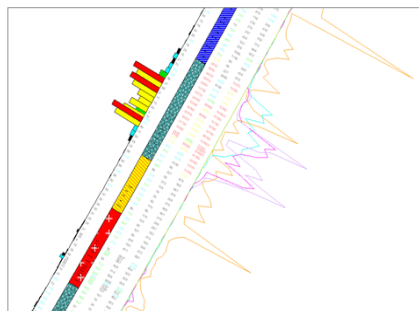


Interpolate and manipulate massive gridded surfaces, such as continental-scale LIDAR data.

ENCOM DISCOVER IS THE ESSENTIAL GIS TOOLBOX FOR THE EXPLORATION INDUSTRY - FROM REGIONAL EVALUATION AND INITIAL TENEMENT ACQUISITION, THROUGH TO DETAILED PROSPECT-SCALE DRILLING AND MINERALISATION MODELLING.

Drillholes

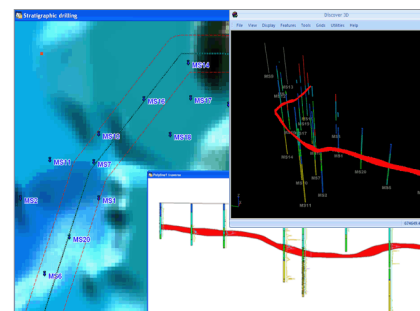
Discover's feature packed Drillhole module enables you to visualise and perform detailed analyses of boreholes, drillholes and trenches within the MapInfo Professional environment. Generate logs, cross-sections, long sections, non-linear sections and plan views detailed with histograms, linegraphs, and trace-shades, and output these as professional quality layouts. The true spatial context of all data is maintained, allowing the overlay of all other GIS datasets, such as geophysical modelling, geological and regolith mapping, interpolated geochemical surfaces, and topographic grids.



Detailed annotation of drillhole sections for precise analysis and interpretation.

Drillhole projects are seamlessly integrated with the Encom Discover 3D application, allowing advanced modelling in the 3D environment.

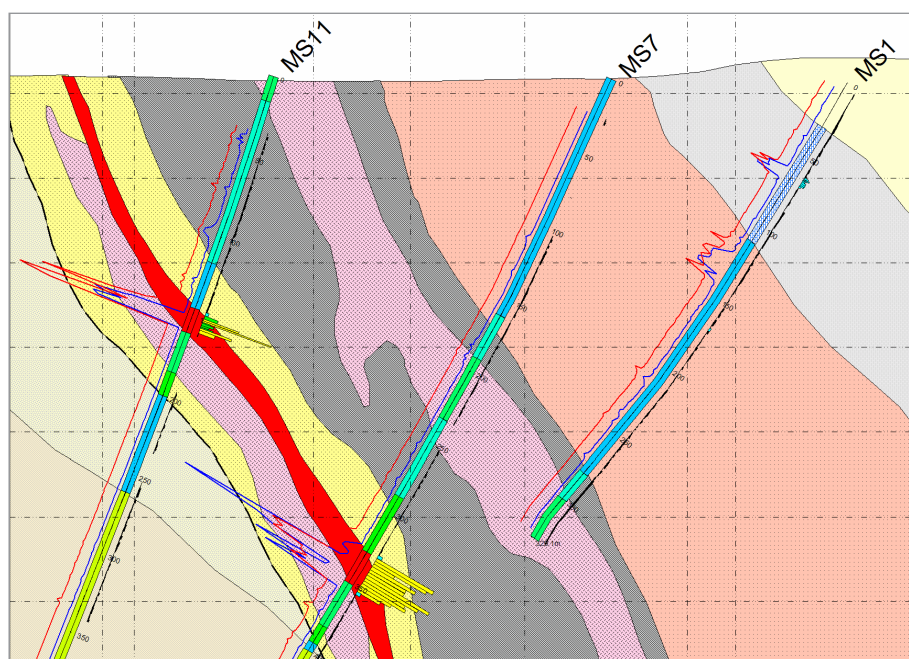
For example, digitised 2D sectional interpretations (such as geological boundaries) can be wireframed in 3D as solids, and downhole data can be interpolated as voxel/block models.



Non-linear cross-sections in both 2D and 3D can assist in engineering studies, such as tunnel geotechnical evaluations.

Productivity

Discover provides a rich set of productivity tools that will enhance the experience of any MapInfo Professional user, as well as a range of specialised utilities for geoscientists. This enhanced set of layer, window, object, table, and data tools comprises a multitude of shortcuts and useful new functions which make complex and repetitive tasks easy to perform. Once you've used Discover's productivity tools, you'll wonder how you ever survived without them.



Produce and print professional quality drillhole section and plans.

Digitise

The Discover application simplifies the digitising of geological, regolith, and area usage polygons by intelligently converting linework into attributed polygon vector objects. Discover automatically checks and cleans the linework, resolving gaps, overlaps, and loops, and streamlines the process of adding attributes to the resulting polygons.

Discover can also auto-increment integer attributes (e.g. sample numbers) during digitisation, as well as auto-fill text or numeric attributes, and prompt for other location-specific data. Combine this with the extensive and customisable styles library of geoscience-specific objects, and you have an efficient data capture tool for converting historical imaged data into usable vector data.

Map Making

Professional map production is a breeze with the Scaled Output wizard. Automatically create correctly scaled and sized layouts for your desired page size, with titleblocks, scalebars and map grids. Use the MapShop module to create and print multiple map layouts automatically from a series of map sheet boundaries covering a region, with auto-generated location indexes.

TO LEARN MORE ABOUT ABOUT ENCOM DISCOVER VISIT WWW.PBINSIGHT.COM.AU OR CALL +61.2.9437.6255.

ASIA-PACIFIC/AUSTRALIA

Level 7
1 Elizabeth Plaza
North Sydney NSW 2060
+61.2.9437.6255
pbbi.australia@pb.com
pbbi.singapore@pb.com
pbbi.china@pb.com
www.pbinsight.com.au

UNITED STATES

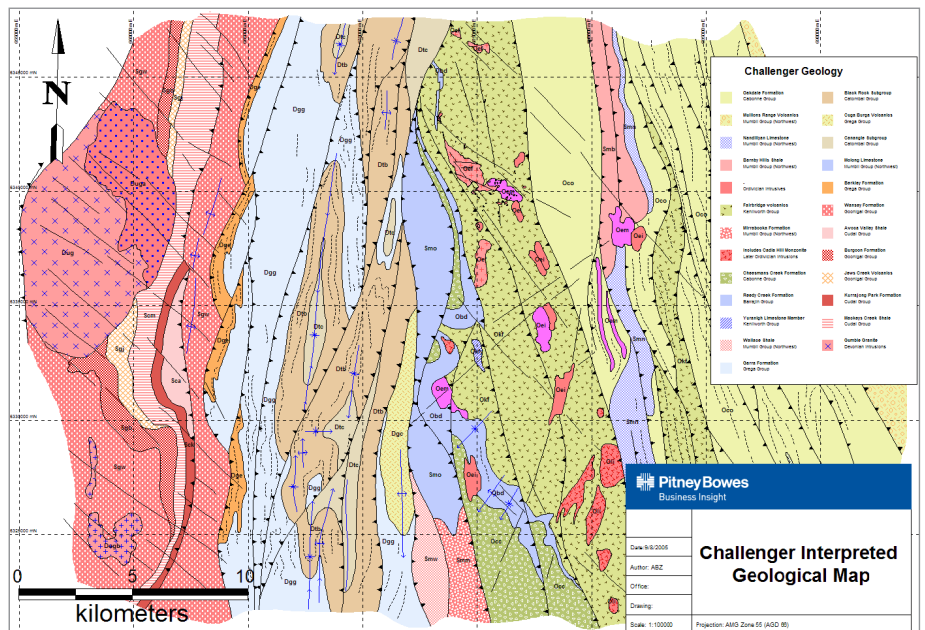
One Global View
Troy, NY 12180-8399
+1.800.327.8627
pbbi.sales@pb.com
www.pbinsight.com

CANADA

26 Wellington Street East
Suite 500
Toronto, ON M5E 1S2
+1.800.268.3282
pbbi.canada.sales@pb.com
www.pbinsight.ca

EUROPE/UNITED KINGDOM

Minton Place
Victoria Street
Windsor, Berkshire SL4 1EG
+44.1753.848200
pbbi.europe@pb.com
www.pbinsight.co.uk



Professional quality map production.

