

## RockWorks15

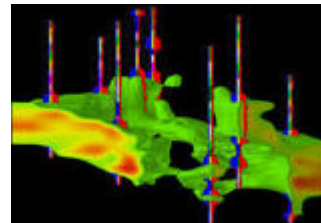
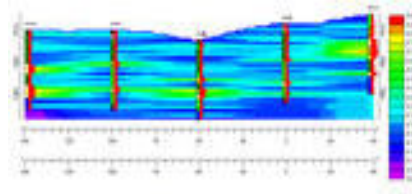
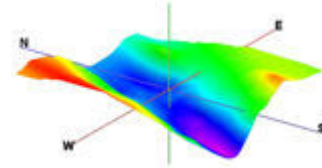
**RockWorks15** is the latest version of RockWare's flagship software program. RockWorks has long been the standard in the petroleum, environmental, geotechnical and mining industries for subsurface data visualization because of [popular tools](#) such as maps, logs, cross sections, fence diagrams, solid models and volumetrics.

**RockWorks** offers numerous options for analyzing your subsurface data, and accepts many different [data types](#), such as stratigraphy, lithology, quantitative data, color intervals, fracture data and hydrology and aquifer data.

In addition to its already impressive collection of existing capabilities, the latest RockWorks version has numerous new features, including an MDB borehole database, an interactive log designer, graphic editing tools, and much more.

**RockWorks** is extensively used in the following industries:

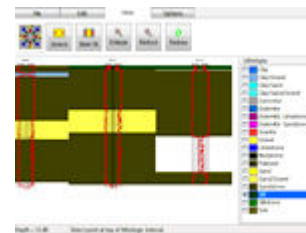
- [Geotechnical](#)
- [Environmental](#)
- [Mining](#)
- [Petroleum](#)



## New Features in RockWorks15

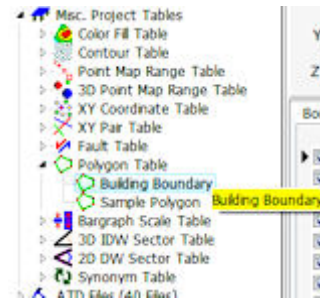
### New Data Tools

- Support of **MS SQL Server** and other databases.
- **Lithology Picker**: Pick your lithology intervals from raster or geophysical logs in an interactive window.



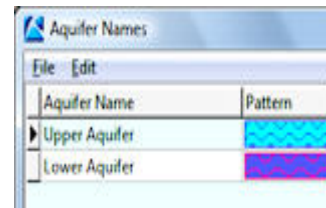
RockWorks Lithology Picker

- **Lookup Tables:** Project-specific tables, such as color-fill, polygon, point scaling, etc. are now stored in the database.
- **Reorganized Project Manager:** Even easier to access your data, models, and graphics.



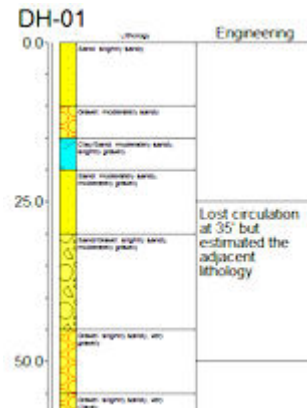
RockWorks Project Manager

- **Multiple Aquifers:** RockWorks now supports multiple aquifers. Define your Aquifer Names, then enter water levels by date for your different aquifers.



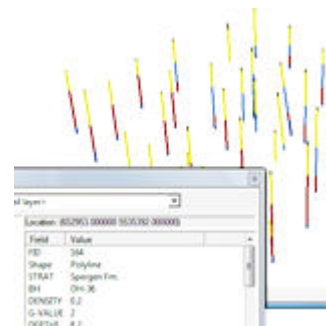
RockWorks Aquifer Types

- **I-Text and P-Text:** Enter non-numeric data - sample numbers, comments, etc. - and display on your logs.
- **Shapefile Import:** Import Shapefiles and attributes into the Utilities datasheet.



Interval text in RockWorks striplog

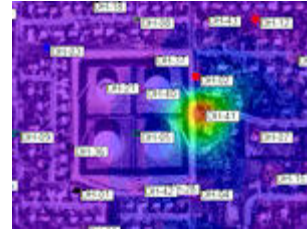
- **Shapefile export:** Export log data (lithology, stratigraphy, I-Data, T-Data, P-Data, fractures, water levels, well construction) to 3D Shapefiles, with attributes. Display and analyze in ArcScene.



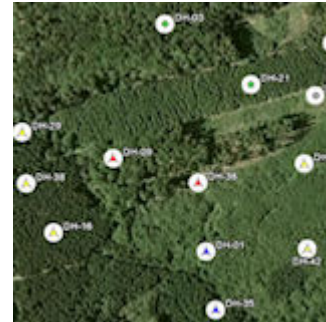
RockWorks 3D Shapefile Export

## New Mapping and Gridding Options

- **Transparency:** Adjust the transparency of color contour and raster layers in your RockPlot2D images.
- **Kriging Tools:** New variogram models, an interactive variogram editor, and a variogram matrix plot.
- **Google Earth:** Display your borehole locations in Google Earth.
- **Drainage Nets / Flow Maps:** New tools in 2D and 3D, with exports of line segments, fill sinks, and stratigraphy filters.
- **Rose and stereonet diagrams** from grid models: Run a topography grid through a slope/aspect analysis and generate a rose or stereonet diagram.
- **New Range/Township/Section Coverage** - The free RockWare LandBase has been expanded to cover most of the U.S.
- **New map & coordinate projections** are offered, including State Plane.
- **Easy section maps** for your project area.



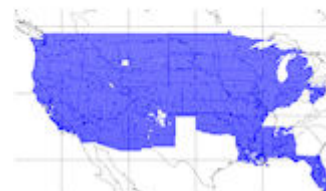
Transparent color contours overlaying an aerial photo in RockWorks



RockWorks borehole locations displayed in Google Earth



RockWorks Drainage Map

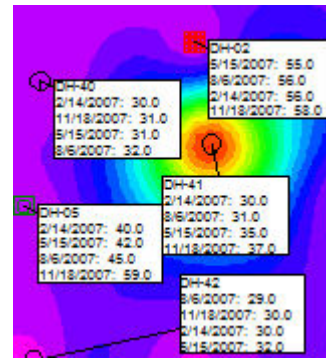


- **New color palettes:** Automatic palettes, custom palettes, and multiple color cycles.
- **Shaded relief:** Display 2D contour maps with a variety of shaded relief options.



Shaded Relief applied to RockWorks Contour Map

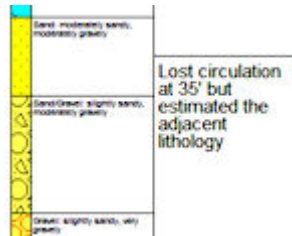
- **Point Map Layers:** Symbols and labels added for all Borehole Manager maps (stratigraphy, t-data, etc.)
- **Point Map Labels:** Detailed labels can display varied types of data, such as stratigraphy thickness, water level elevations, T-Data dates and values, and more.



Detailed Point Map Labels in RockWorks

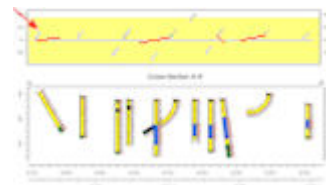
## New Striplog and Cross Section Tools

- **I-Text and P-Text:** Display downhole comments, notes, etc. in striplogs.
- **Text Wrapping:** Display detailed descriptions.



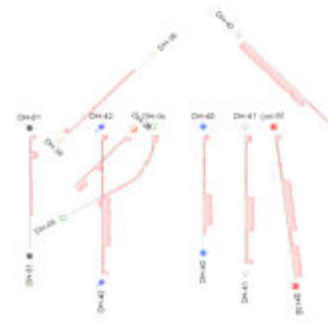
RockWorks striplog with wrapping text

- **Profile "Stripmaps":** Plot borehole locations relative to projected profiles, along with collar distances.



Add a Stripmap to the Top or Bottom of a Striplog or Interpolated Profile Diagram

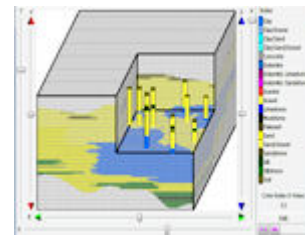
- **Log Titles:** Plot at the top and/or base of the logs - handy for inclined and deviated holes.
- **Custom Color Tables:** Link these to your 2D I-Data and T-Data bargraphs



Display borehole IDs and symbols at the top and/or base of the holes

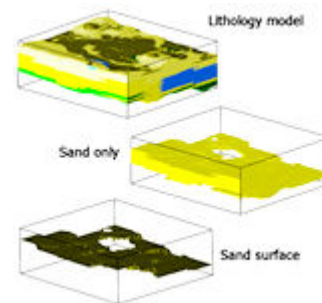
## New Solid Modeling and Display Tools

- **Interactive Editor:** Use the new 3D solid model editor to edit individual voxels or blocks drawn as polyhedra.
- **Filters:** Automatic filtering of ground surface and borehole bases (manual options too).



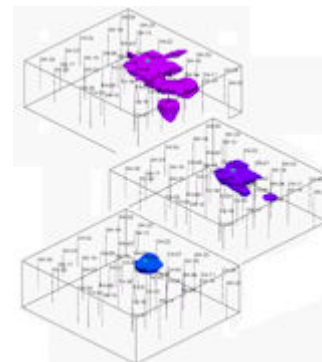
RockWorks interactive solid model editor

- **Lithology models:**
  - Create surfaces for uppermost and lowermost contacts.
  - Create isopach maps and models.



Use RockWorks to generate lithology surfaces

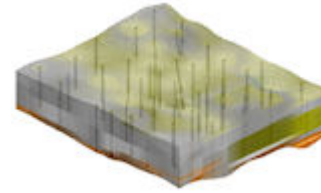
- **Animations:**
  - Animate increasing/decreasing **isolevels**.
  - Animate automatic **beveling** of voxel blocks or isosurfaces.
- **Contours:** Display contours on the faces of 3D isosurface cutouts.



Animate Isolevels in RockPlot3D

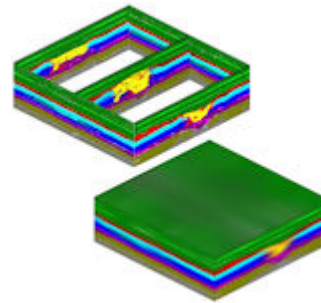
## New Color Modeling Tools

- **Borehole Colors:** Interpolate a solid color model from borehole color intervals.
- **Color Import:** Import colors into boreholes using descriptive data (such as Munsell codes) or raster images.
- **Display Options:** Display a color model as 3D voxels, 3D fence panels, 2D section or profile, or 2D plan map.



RockWorks Color Model  
Displayed as Voxels in  
RockPlot3D

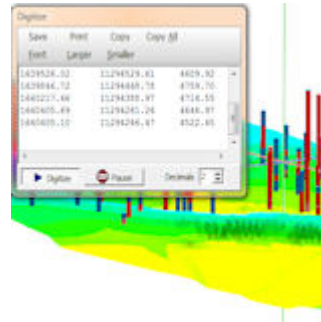
- **Raster Images:** Interpolate a color model from vertical image panels.



Vertical Raster Images  
Interpolated into a Solid Color  
Model

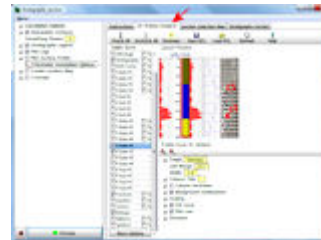
## New RockPlot3D Tools

- **World Coordinates:** View the XYZ coordinates at any point within the display.
- **Digitize Coordinates:** Digitize XYZ coordinates by clicking in the 3D view.



Capture XYZ Coordinates for any  
3D view locations

- **Embedded Striplog Layout Tools:** Click on the Striplog Designer tab to define the log settings.
- **Embedded Profile, Section, Fence tabs:** Click on the Select Map tab to define the panel locations.



Log Designer tools embedded in  
Options window