

The Log Plotting Solution

LogPlot 7 overview

LogPlot has been used by geoscientists since 1983 to display their geotechnical, environmental, geophysical, mud/gas, and mining data as a graphic boring log. **LogPlot** offers almost unlimited flexibility for log layout via its easy-to-use, built-in Log Designer. With a revamped point-and-click interface, **LogPlot's Log Designer** makes it easy to customize logs for different clients and projects. Field data can be entered into **LogPlot's Data Editor** using the keyboard, copy/paste, data collection, and/or import tools (LAS, **RockWorks**, Excel, ASCII, DBF). Multiple libraries of soil and rock types are included with **LogPlot**, and you can easily customize them to suit your company's needs. Compile the data in to the design at any vertical scale for single-page, multi-page, or continuous logs. Distribute the free **LogView** program with your logs so your clients can view and print your **LogPlot** logs. Or, create HTML log pages or JPG, BMP, TIFF, PNG, WMF and EMF images.

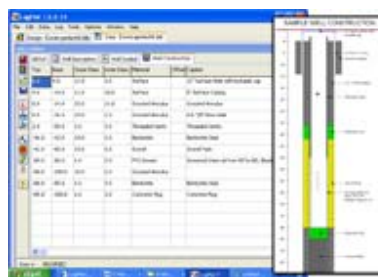
LogPlot features

- Easy-to-use LogPlot Log Designer**
 The new and improved Log Designer offers great flexibility in borehole log designs - use a pre-configured design as-is (25+ shipped with the program) or create your own. The **LogPlot Designer** is easy to use, with point, click, multiple-select and alignment capabilities. Create detailed headers, footers, and log bodies in their separate design areas. Toolbar buttons offer quick access to the 10 header/footer tools and 18 log body tools.



LogPlot's Log Designer

- Easy-to-use LogPlot Data Editor**
 Tabbed spreadsheet windows make entering data a snap. Point-and-click selection of rock or soil types. Type, paste, or import data from outside datasources. The **LogPlot Data Editor** includes tools for automatic depth intervals, arithmetic operations, data smoothing and filtering, and import from LAS, Excel, **RockWorks** boreholes, ASCII, and DBF. Users have access to USGS and USCS lithology patterns and keywords, international users have access to foreign language keyword sets.



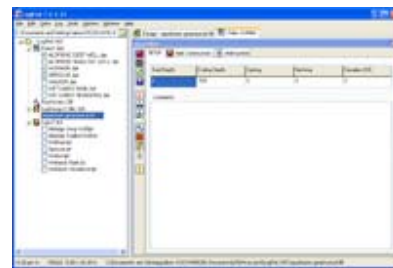
LogPlot's Log Data Editor

- Easy borehole log compiling**
 With your log design and data file open, just set your plotting scale in English or metric units, click OK, and see your borehole log displayed on the screen in the [LogView](#) window. **LogPlot 7** now allows you to compile multiple logs at one time!



*Compiling a borehole log in **LogPlot 7***

- New and easy-to-use File Manager**
 The new file manager window allows you to view all of the Data, Design and Plot files within a designated project directory. The File Manager also reads and links directly to borehole data stored in a RockWorks MDB database file. Open multiple **LogPlot** DAT, Rockworks borehole, and graphic log files in one easy step!



File Manager

- Share a borehole log with clients and co-workers**
 The LogView portion of **LogPlot** is freely distributable as a stand-alone program. When installed on a client's or co-worker's computer, they can open, print, and export your saved **LogPlot** logs
- Single-page or continuous printing**
 Print to any printer or plotter you have installed in Windows on single sheet or continuous paper
- Data export to RockWorks, LAS, and Excel format**
LogPlot data can be exported to ASCII or Excel files. You can also export **LogPlot** curve data to standard LAS 2.0 format. RockWorks2006 imports **LogPlot** DAT files directly into the Borehole Manager database.
- Borehole log diagram export**
 Export borehole log plots to HTML tables for continuous display in a web browser and easy distribution. Export continuous logs in Windows Metafile (wmf) or Enhanced Metafile (emf) formats. Export BMP, JPG, TIFF, or PNG images of individual log pages, or export all pages in a single image. You can also export your logs to [ReportWorks](#) for page layout display.
- Batch compiling**
 Build an on-screen list of data files to be compiled into graphic logs, which can be printed and/or saved

- **Built-in tutorial**
The **LogPlot** tutorial takes you step-by-step through the processes of designing borehole logs, entering data, establishing program settings, and compiling logs
- **USCS/USGS patterns and international keyword sets**
RockWare staff have meticulously designed pattern files and keyword sets that comply with the United Soil Classification System as well as sets that comply with USGS internal standards. Additionally, lithology keyword sets have been created for our German, Spanish, French and Italian speaking users.

LogPlot in industry - Petroleum and geophysics, Environmental and geotechnical, Mining

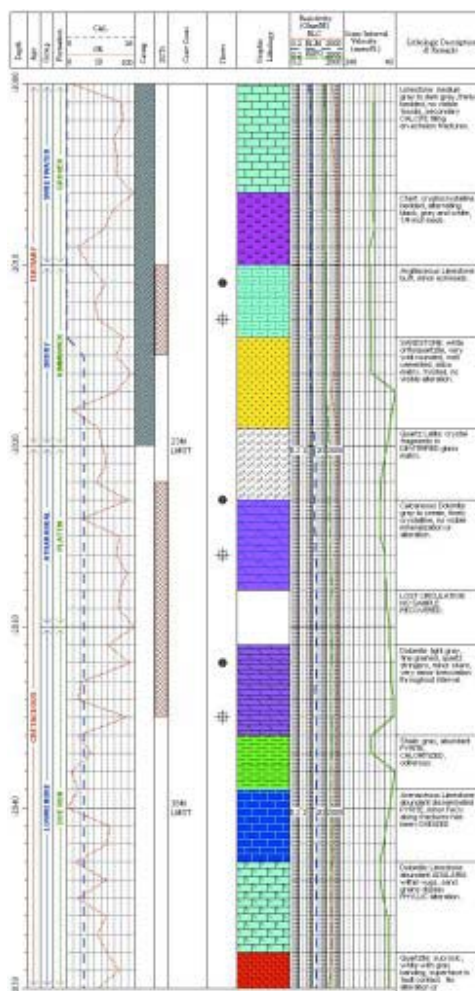
Petroleum, mudlogging and geophysics

LogPlot 7 is a flexible well logging software tool that is commonly used in petroleum, mud logging and geophysical industries. **LogPlot 7** can be installed on a laptop so it can be used on-site for real-time logging. The user can create a large number of well plots with little experience in a short amount of time. Use curves to display GPR, gamma ray, resistivity, sonic, LAS and other point data. Use the well construction tool to display single or multiple wells. Create your own template, use one that is provided, or have RockWare custom design a template for you.

LogPlot 7 has several major improvements for our clients in the petroleum industry for displaying their well logs. **LogPlot 7** gives you the tools needed to design your well logs to easily display reservoir attributes.

New LogPlot 7 features for the oil and gas industry:

- Curve, Bar Graph, and Cross Plot Curve columns can be set to be scaled automatically based on the data range. Any linked header/footer legends will be updated accordingly. This is handy for imported data, such as from LAS files.
- Curve columns can be linked to a user-defined scale table, whereby specific depth range(s) can have a different minimum-maximum (left-right or right-left) scale.

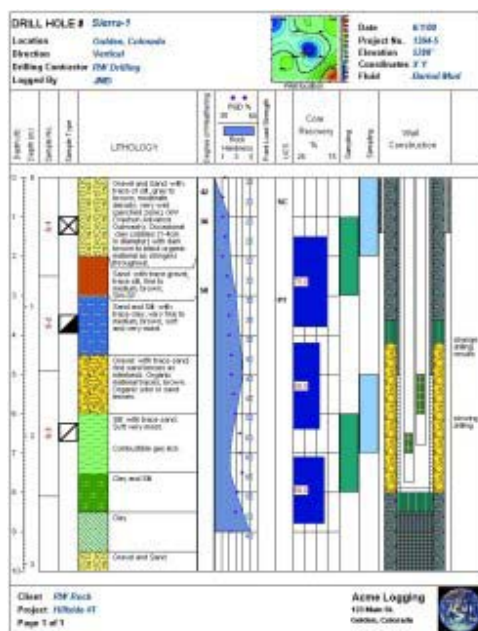


A **LogPlot** log displaying oil and gas related well data

- The LAS import tool offers resampling of the curve data
- Raster exports (TIFF, PNG, etc.) of the entire log as a single page. Very handy if you need to import a raster image into another software program or print to a long PDF.
- Edit and Static text offer left, center, right, top, and bottom alignment, with transparent or opaque backgrounds.
- A new and improved Log Design interface
- The new File Manager
 - Manager your data, design and plot files
 - Display, open, and compile any RockWorks MDB borehole data, or easily save it to a LogPlot DAT file
 - Import RockWorks lithology and stratigraphy types directly from the MDB database
 - Compile multiple data files at once

Environmental and geotechnical industry

LogPlot 7 is a commonly used boring log software tool in both the environmental and geotechnical industries. **LogPlot 7** gives the user the capability to create a large number of high quality logs in a fraction of the time it would take to use a CAD product or other logging programs. Use fill bars to show sample intervals and types, or the presence of NAPLs or other contaminants. Show blow counts, contaminant concentrations, recovery, RQD, and other parameters as downhole bar graphs or text entities. Use USCS and lithology patterns included with the program or create your own in-house patterns and symbols. Include detailed notes in your Lithologic descriptions and in Header and Footer notes, with flexible text formatting. **LogPlot 7** offers detailed well construction diagrams which can illustrate single or multiple borings, along with captions and labels. Display your logs at defined vertical scales, or fit them automatically to the page.



A LogPlot log displaying environmental/geotechnical borehole data

New LogPlot 7 features for the environmental/geotechnical industry:

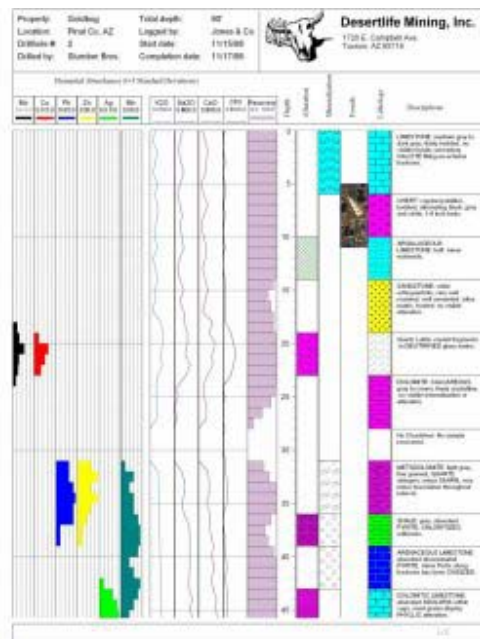
- The new File Manager
 - Manage your data, design and plot files
 - Display, open and compile any RockWorks MDB borehole data, or easily save it to a LogPlot DAT file
 - Import RockWorks lithology and stratigraphy types directly from the MDB database
 - Compile multiple data files at once
- The improved Excel import tool can import data for more than one borehole from a single XLS file

- Well Construction columns now have automatic caption labels with lines or arrows
- A new and improved format for Lithology data entry
- An improved Log Designer interface
- Support for Undo in the Log Design window

LogPlot in mining: industrial minerals, aggregates, sand and gravel, metals, coal, limestone

LogPlot 7's extraordinary flexibility has made it a popular drillhole logging software tool for numerous diverse mining companies. Whether you're drilling for industrial minerals, aggregates, sand and gravel, metals, coal, limestone or any other resource, **LogPlot 7** is the drillhole log display tool you need.

Use **LogPlot 7's** lithology column entity to display lithology, interpreted stratigraphy, mineral alteration, limestone grades, or other ore types. **LogPlot 7** allows you to select from a library of over 200 lithology patterns, or design your own. Display any type of interval data - metal assays, BTU values, to measured impurity levels, for example - as downhole bar graphs. If your data is point based, rather than interval, use **LogPlot 7's** curve column entity. Other data types, such as symbols, insertable bitmaps or images, scale bars, line entities, dynamic text, wrapping lithology descriptions, fillbars and drillhole completion entities allow you to present virtually any type of data you measure downhole. **LogPlot 7** allows you to order these entities in any format in the Log Designer.



*A **LogPlot** log displaying mining-related drillhole data*

LogPlot 7 system requirements

- Windows 98/ME/NT/2000/XP/Vista (2000, XP or Vista recommended)
- Pentium or faster processor
- 128 MB RAM
- 10 MB free hard drive space
- **LogPlot** supports all Windows® compatible printers and plotters